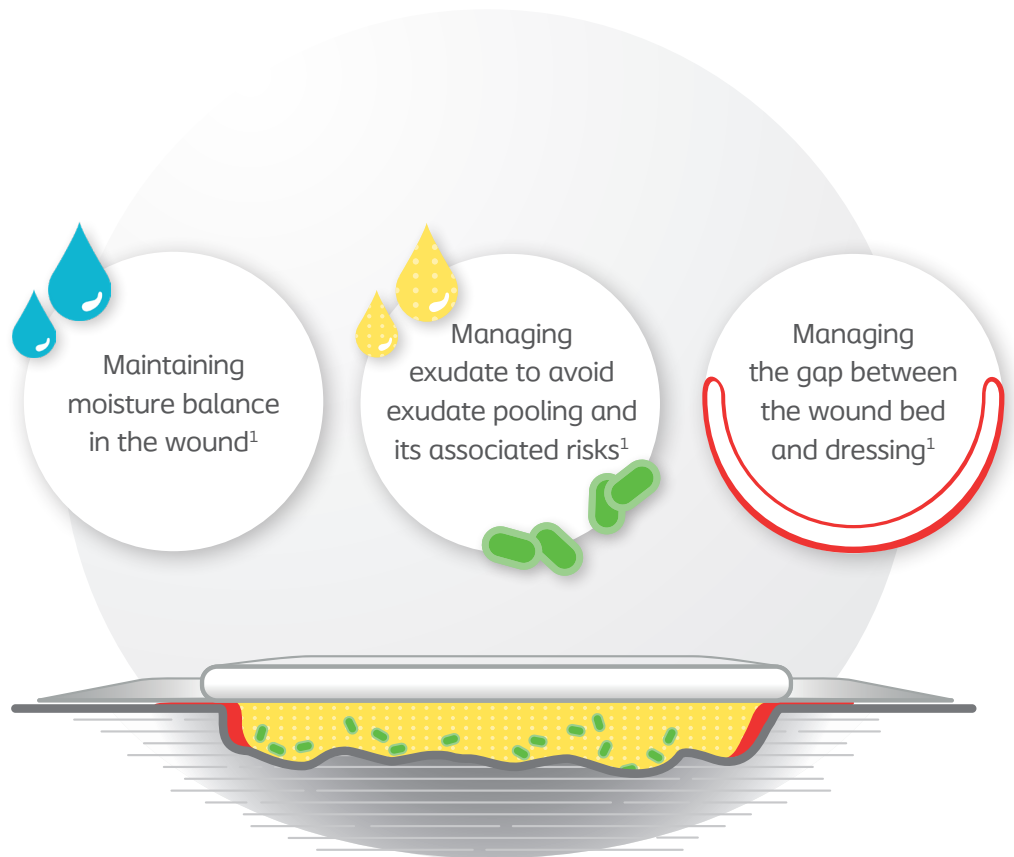


# Managing exudate is key for optimal wound healing and improved patient outcomes

HIGHLIGHTS  
from a consensus-  
building process

In Autumn 2019, wound care experts from around the globe gathered to discuss best practices in wound management

**85 wound care experts** came to agreement on key steps for optimising wound treatment and improving patient quality of life.



## Key learnings from the wound care experts

Exudate management is key

96%

of participants agreed that effective management of wound exudate is **one of the best ways to promote an optimal healing environment** for both acute and chronic wounds<sup>1</sup>

Managing the gap is important for effective wound healing

98%

of participants agreed that managing the gap is important or **very important for effective wound healing**<sup>1</sup>

A dressing needs to conform to the wound bed

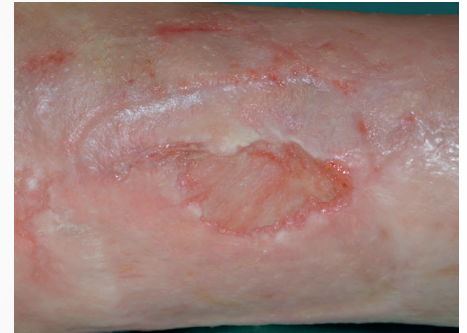
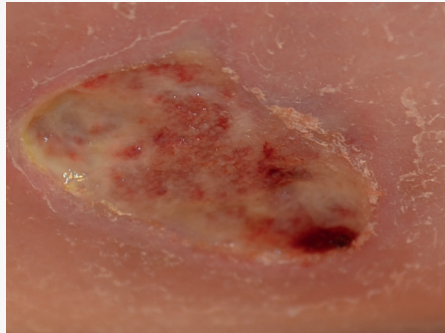
83%

of participants agreed that the best dressing choice for wounds down to 2 cm deep is **a dressing that conforms to the wound bed**<sup>1</sup>

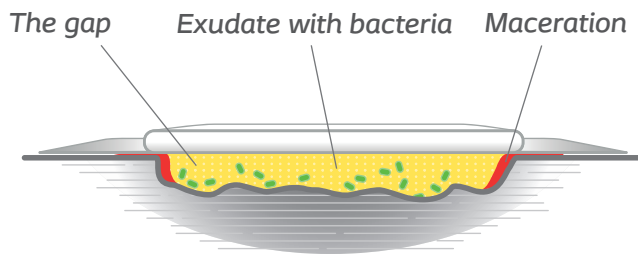
# Exudate pooling can occur in all types of wounds

All wounds lie below the skin surface, which may create a gap that needs to be managed

A dressing that does not conform to the wound bed leaves a gap between wound bed and dressing.<sup>2</sup>



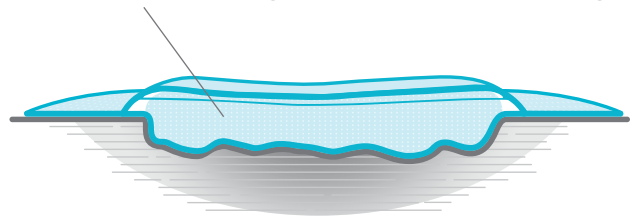
## Appropriate dressing selection can help manage exudate and avoid exudate pooling<sup>1</sup>



### Conventional dressings may not manage the gap

Conventional dressings, which do not conform to the wound bed, can leave a gap – resulting in exudate pooling and associated risks such as leakage, maceration and infection.

Reduces exudate pooling and the risk of bacterial growth



### A conforming dressing manages the gap challenge

A dressing that conforms is in contact with the wound bed and absorbs and retains wound fluid to avoid gap formation and the risks associated with it.<sup>2</sup>

## Clinical benefits of Biatain<sup>®</sup> Silicone with 3DFit Technology



**Biatain Silicone with 3DFit Technology** ensures optimal wound healing conditions, reducing leakage and the risk of maceration and infection



**Conforms to the wound bed** to fill the gap and reduce exudate pooling for optimal wound healing conditions



**Absorbs vertically** to reduce risk of maceration



**Retains exudate** Absorbs exudate and retains 99.98% of bacteria

#### References:

- 1: The GAP Challenge Report, 2019.
- 2: Dowset et al., 2019, A focus on the Triangle of Wound Assessment — addressing the gap challenge and identifying suspected biofilm in clinical practice. Wounds International 2019 | Vol 10 Issue 3

Ostomy Care / Continence Care / Wound & Skin Care / Interventional Urology